

## Troubleshooting Guide

- mechanical -



*Xperia Z3<sup>TM</sup>*  
*D6603, D6616, D6643, D6653, D6646*

## CONTENTS

<b>1</b>	<b>Problem Areas .....</b>	<b>5</b>
1.1	Power .....	5
1.1.1	Will not power on or will switch off randomly .....	5
1.2	Keys .....	7
1.2.1	Back, Menu, Home and Multitask Keys .....	7
1.2.2	Volume Key .....	7
1.2.3	On/Off Key .....	8
1.2.4	Camera Key .....	10
1.3	Touch Screen .....	11
1.3.1	Touch Screen malfunction .....	12
1.4	Display .....	14
1.4.1	Graphics & Illumination .....	14
1.5	LED/Illumination .....	15
1.5.1	LED/Illumination .....	15
1.6	Speaker .....	16
1.6.1	Loudspeaker .....	16
1.7	Earphone .....	17
1.7.1	Ear Speaker .....	18
1.8	Microphone .....	18
1.8.1	Primary Microphone .....	19
1.8.1	Secondary Microphone .....	21
1.9	Vibrator .....	22
1.9.1	Vibrator not generating alerts .....	22
1.10	Camera .....	23
1.10.1	Main Camera .....	23
1.10.2	Video Call Camera defects .....	24
1.11	Flash LED .....	24
1.11.1	Flash LED not flashing .....	25
1.12	Bluetooth and WLAN .....	25
1.12.1	Bluetooth or WLAN connection failure .....	26
1.13	NFC .....	26
1.13.1	NFC malfunctions .....	27
1.14	GPS .....	27
1.14.1	GPS malfunctions .....	28
1.15	Compass .....	28
1.15.1	Compass fails .....	29
1.16	Accelerometer .....	29
1.16.1	Accelerometer test fails .....	30
1.17	Gyroscope .....	31
1.17.1	Gyroscope test fails .....	31
1.18	Ambient Light Sensor .....	32
1.18.1	Light Sensor malfunctions .....	32

<b>1.19 Proximity Switch .....</b>	<b>33</b>
1.19.1 Proximity switch malfunctions.....	33
<b>1.20 Pressure Sensor.....</b>	<b>34</b>
1.20.1 Pressure Sensor test fails.....	34
<b>1.21 Water Resistance .....</b>	<b>35</b>
1.21.1 Water Resistance fails.....	35
<b>1.22 Real Time Clock .....</b>	<b>41</b>
1.22.1 Real time clock test fails .....	41
<b>1.23 Total call time .....</b>	<b>42</b>
1.23.1 Total call time fails .....	42
<b>1.24 External Memory .....</b>	<b>43</b>
1.24.1 Memory Card not detected .....	43
<b>1.25 Security.....</b>	<b>44</b>
1.25.1 Security fails .....	44
<b>1.26 FM Radio.....</b>	<b>45</b>
1.26.1 No/Poor FM Radio reception .....	45
<b>1.27 Battery Health test .....</b>	<b>46</b>
1.27.1 Battery Health test fails.....	46
<b>1.28 Flip Slider Counter .....</b>	<b>47</b>
1.28.1 Flip Slider Counter fails .....	47
<b>1.29 Verify Certificates.....</b>	<b>48</b>
1.29.1 Verify Certificates fails .....	48
<b>1.30 IrDA Test .....</b>	<b>49</b>
1.30.1 IrDA test fails .....	49
<b>1.31 TV-Out Test.....</b>	<b>50</b>
1.31.1 TV-Out test fails .....	50
<b>1.32 Network &amp; Signal.....</b>	<b>51</b>
1.32.1 No/Poor signal .....	51
<b>1.33 SIM .....</b>	<b>54</b>
1.33.1 SIM not detected.....	54
1.33.2 Incorrect UIM or SIM indicated .....	54
<b>1.34 Charging .....</b>	<b>55</b>
1.34.1 Battery will not charge by USB connector .....	55
1.34.2 Battery will not charge by charge pad .....	55
replace the Magnetic connector.....	56
<b>1.35 Audio Jack test.....</b>	<b>57</b>
1.35.1 Connection to headset fails.....	57
<b>1.36 Data Communication .....</b>	<b>58</b>
1.36.1 Data transfer via System Connector fails.....	58
<b>2 Revision History .....</b>	<b>59</b>

***Always firstly disconnect the Embedded Battery BtB connector to cut off power supply when the Rear Panel is disassembled.***

***Always finally connect the Embedded Battery BtB connector before the Rear Panel is reassembled.***

## 1 Problem Areas

### 1.1 Power

#### 1.1.1 Will not power on or will switch off randomly

**Check:**

Check whether the phone vibrates by pressing the on/off key.

**Action:**

1. If activation of the vibrator is detected, refer to section 1.4 'Display'.

2. If NO activation of the Vibrator is detected, check that the battery is charging when connected to a charger.

**Follow Test Instruction - mechanical chapter 2.3.4 (Charging via USB and Easy Charger), Diagnostic Battery / Charging status.**

**Check:**

Inspect the on/off key.

**Action:**

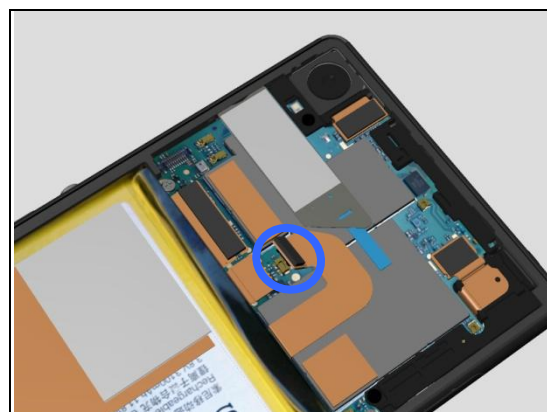
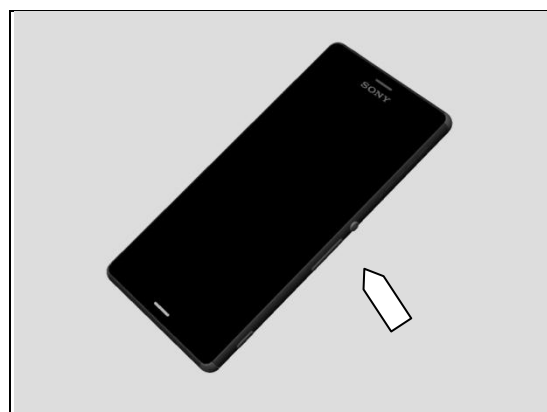
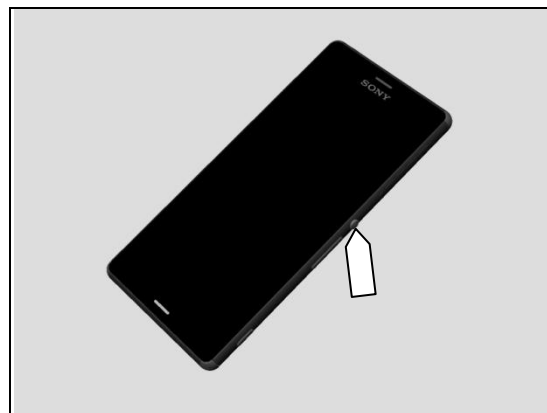
Refer to section 1.2.3 'On/Off Key'.

**Check:**

Inspect the BtB connector of the Embedded Battery to Main PBA.

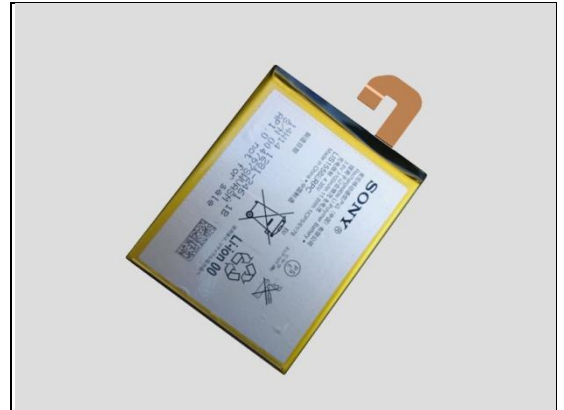
**Action:**

1. If not properly connected – disconnect and reconnect it.  
2. If dirty or oxidized – clean the both sides of the BtB connector.



## Problem Areas: Power

3. If the BtB connector, the FPC or the Embedded Battery is damaged – replace the Embedded Battery.
4. Replace Main PBA.



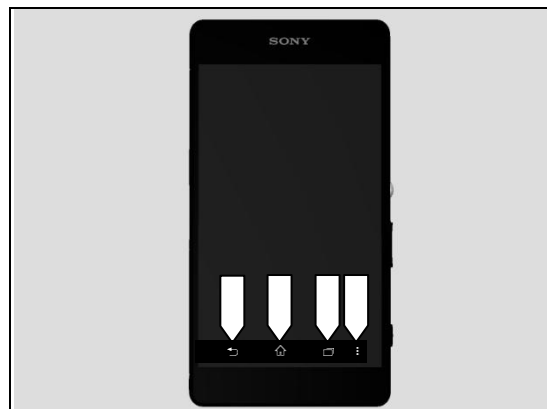
## Problem Areas

### 1.2 Keys

#### 1.2.1 Back, Menu, Home and Multitask Keys

**Action:**

1. Refer to section 1.3 'Touch Screen'.
2. Replace Main PBA.



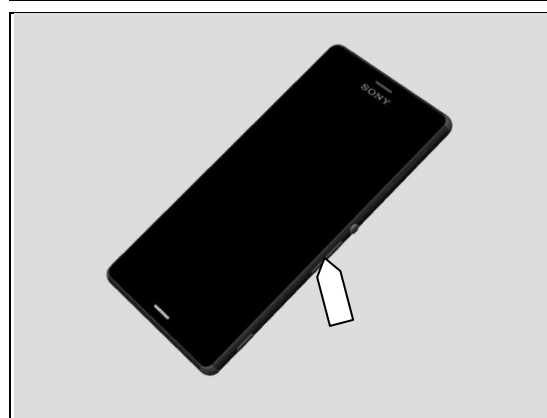
#### 1.2.2 Volume Key

**Check:**

Inspect the external area of the Key Volume.

**Action:**

If dirty – clean it.

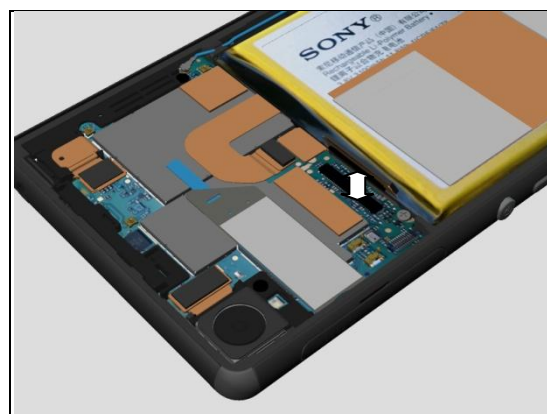


**Check:**

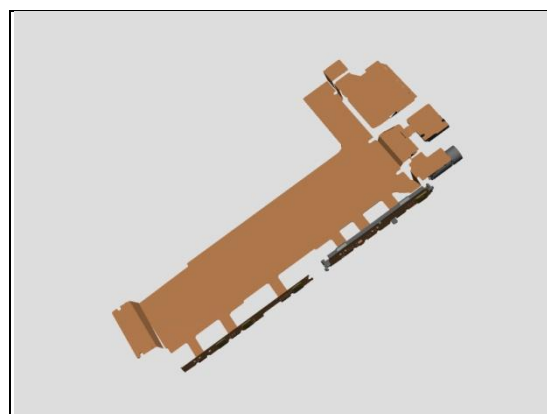
Inspect the BtB connector of Relay FPC to Main PBA.

**Action:**

1. If not properly connected – disconnect and reconnect it.
2. If dirty or oxidized – clean it.



3. If the Relay FPC is damaged – replace it.
4. Replace Main PBA.



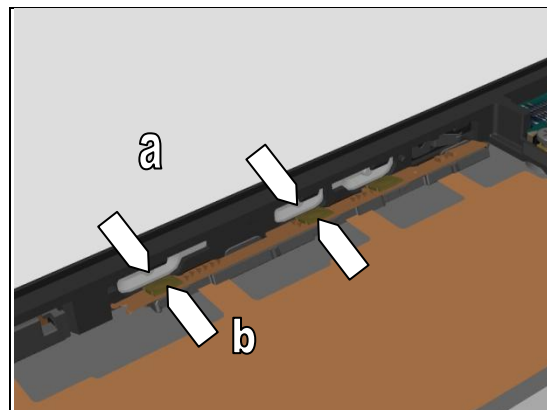
## Problem Areas: Keys

### Check:

Inspect the rubber of the Volume Key (a) and Volume Key switch (b).

### Action:

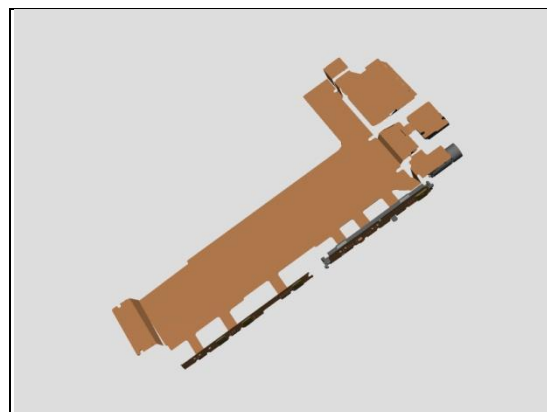
1. If dirty – clean them.



2. If the rubber of the Volume Key is damaged – replace the Front Assy.



3. If the volume key switch is damaged – replace the Relay FPC.



### 1.2.3 On/Off Key

### Check:

Inspect the external area of the On/Off Key.

### Action:

If dirty – clean it.



## Problem Areas: Keys

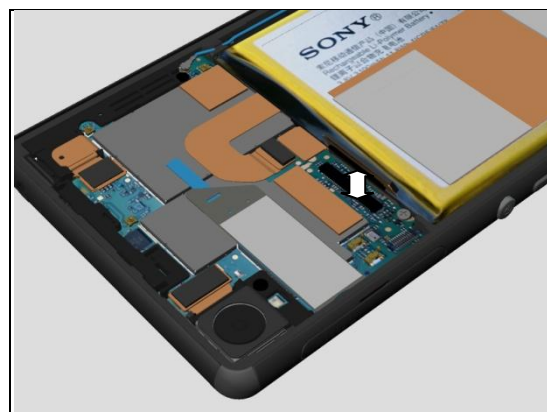


**Check:**

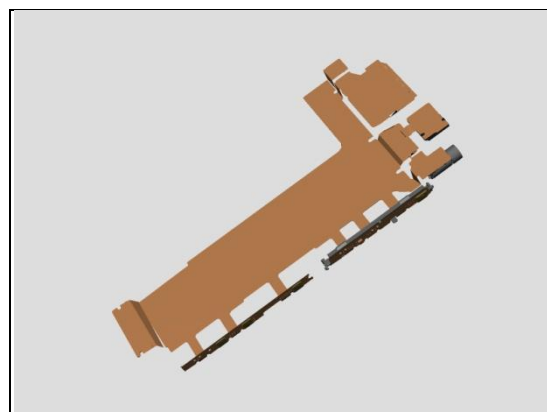
Inspect the BtB connector of Relay FPC to Main PBA.

**Action:**

1. If not properly connected – disconnect and reconnect it.
2. If dirty or oxidized – clean it.



3. If the Relay FPC is damaged – replace it.
4. Replace Main PBA.

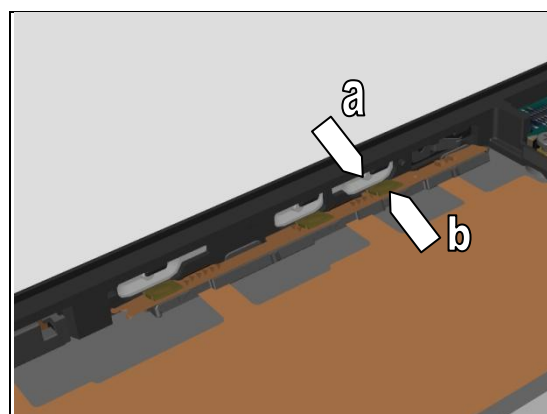


**Check:**

Inspect the rubber of the On/Off Key (a) and On/Off Key switch (b).

**Action:**

1. If dirty – clean them.



2. If the rubber of the On/Off Key is damaged – replace the Front Assy.



## Problem Areas: Keys

3. If the On/Off key switch is damaged – replace the Relay FPC.

## 1.2.4 Camera Key

### Check:

Inspect the external area of the Camera Key.

### Action:

If dirty – clean it.

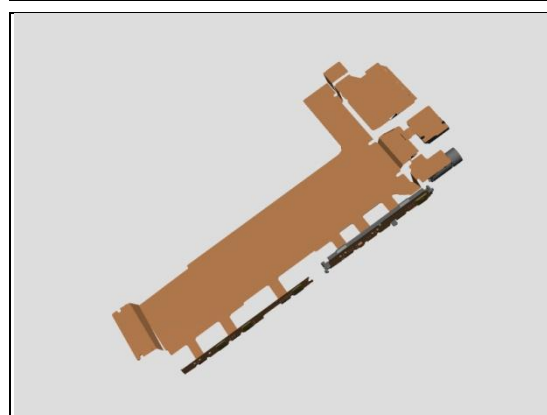
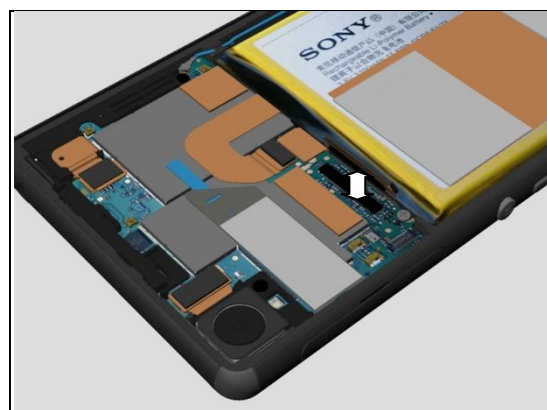
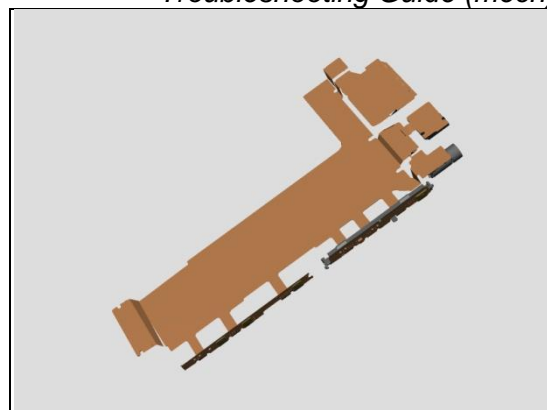
### Check:

Inspect the BtB connector of Relay FPC to Main PBA.

### Action:

1. If not properly connected – disconnect and reconnect it.
2. If dirty or oxidized – clean it.

3. If the Relay FPC is damaged – replace it.
4. Replace Main PBA.



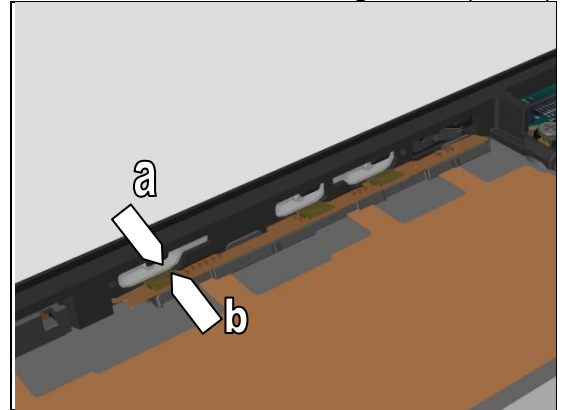
## Problem Areas: Keys

**Check:**

Inspect the rubber of the Camera Key (a) and Camera Key switch (b).

**Action:**

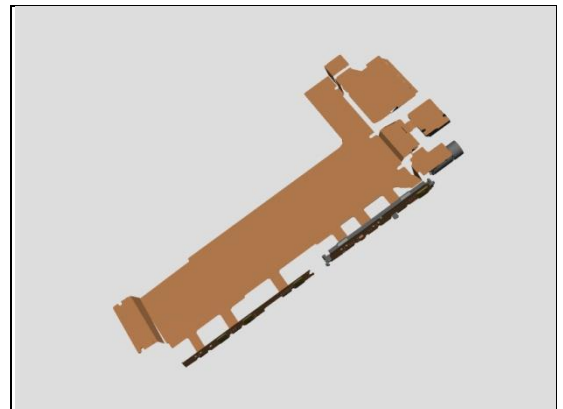
1. If dirty – clean them.



2. If the rubber of the Camera Key is damaged – replace the Front Assy.



3. If the On/Off key switch is damaged – replace the Relay FPC.



## Problem Areas

### 1.3 Touch Screen

## 1.3.1 Touch Screen malfunction

### Check:

Inspect the touch screen of the Front Assy.

### Action:

1. If dirty – clean it.

2. If scratched or damaged – replace the Front Assy.

### Check:

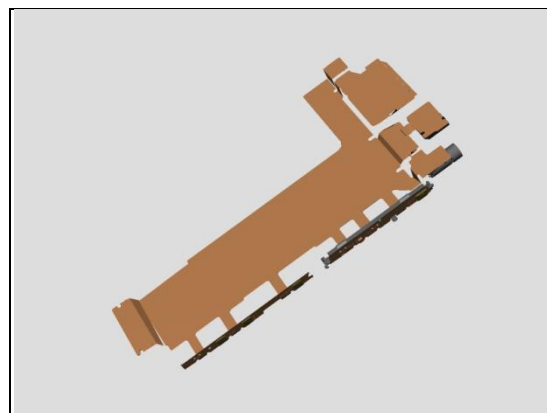
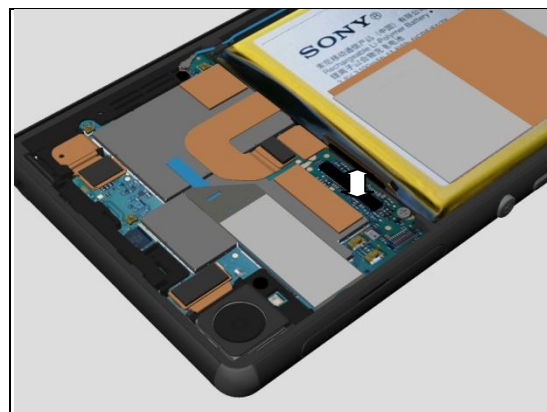
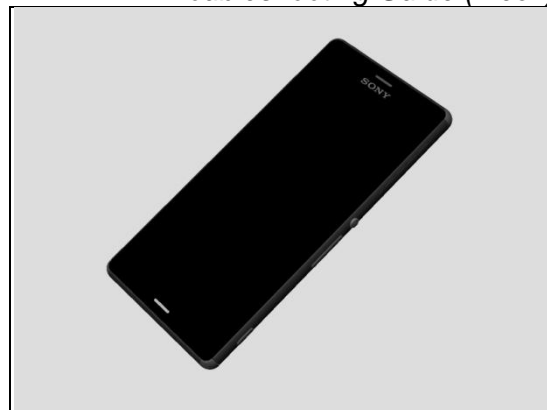
Inspect the BtB connector of Relay FPC to Main PBA.

### Action:

1. If not properly connected – disconnect and reconnect it.

2. If dirty or oxidized – clean it.

3. If the Relay FPC is damaged – replace it.



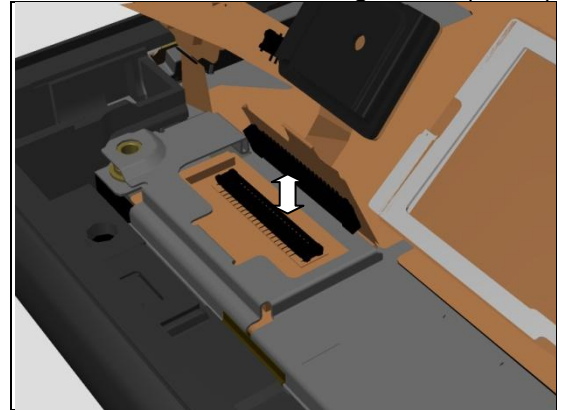
## Problem Areas

**Check:**

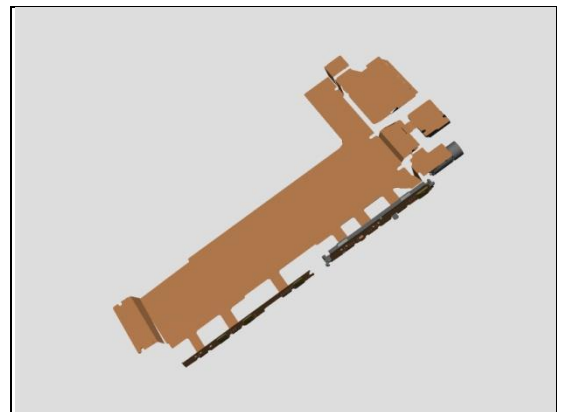
Inspect the BtB connector of Relay FPC to Front Assy.

**Action:**

1. If not properly connected – disconnect and reconnect it.
2. If dirty or oxidized – clean it.



3. If the Relay FPC is damaged – replace it.

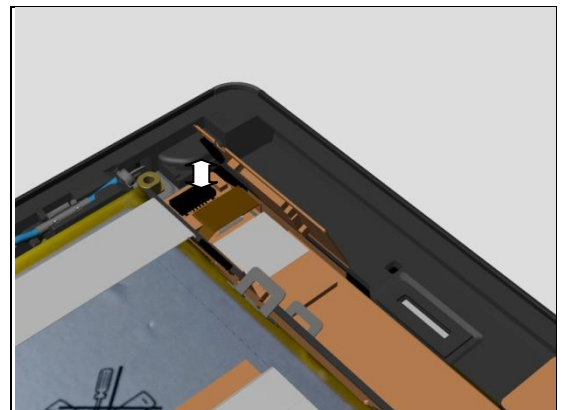


**Check:**

Inspect the BtB connector of FPC on Front Assy.

**Action:**

1. If not properly connected – disconnect and reconnect it.
2. If dirty or oxidized – clean it.



3. If the FPC is damaged – replace Front Assy.
4. Replace Main PBA.



## Problem Areas

## 1.4 Display

### 1.4.1 Graphics & Illumination

**Check:**

Check whether the phone vibrates after the on/off key has been pressed.

**Action:**

If the activation described above is not detected, refer to section 1.1 'Power'.

2. If scratched or damaged – replace the Front Assy.

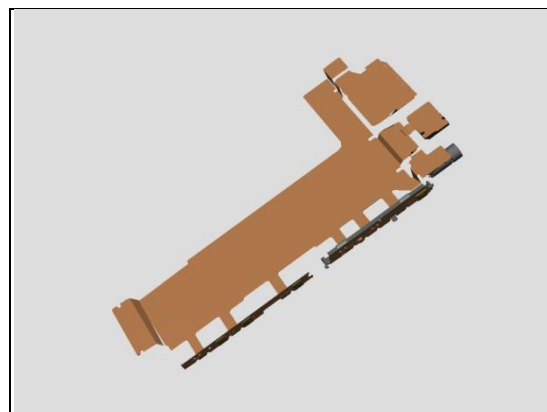
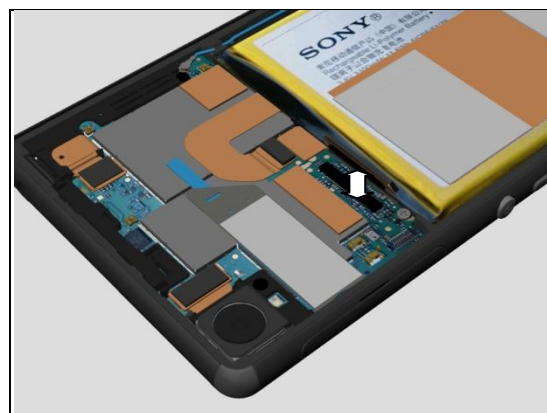
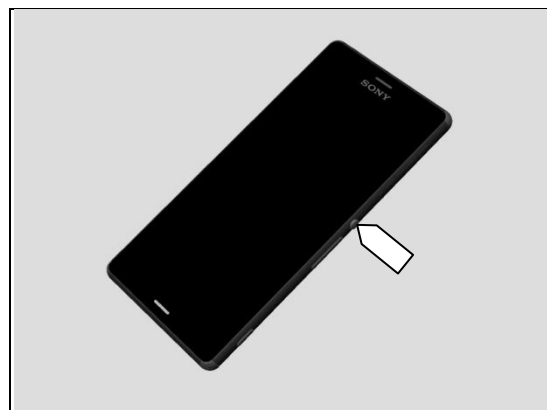
**Check:**

Inspect the BtB connector of Relay FPC to Main PBA.

**Action:**

1. If not properly connected – disconnect and reconnect it.
2. If dirty or oxidized – clean it.

3. If the Relay FPC is damaged – replace it.



## Problem Areas

## 1.5 LED/Illumination

### 1.5.1 LED/Illumination

**Check:**

Inspect external port of LED on the Front Assy.

**Action:**

1. If dirty – clean it.

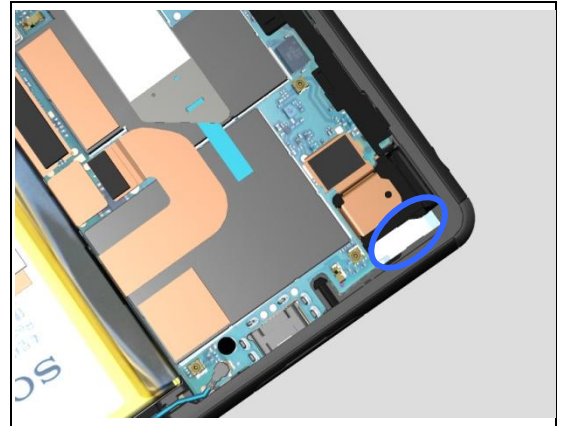


**Check:**

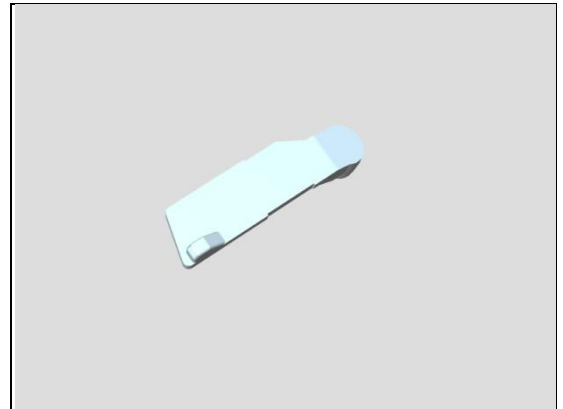
Inspect the Lightguide 3 LED.

**Action:**

1. If not properly assembled – reassemble it.
2. If dirty – clean it.



3. If damaged – replace it.

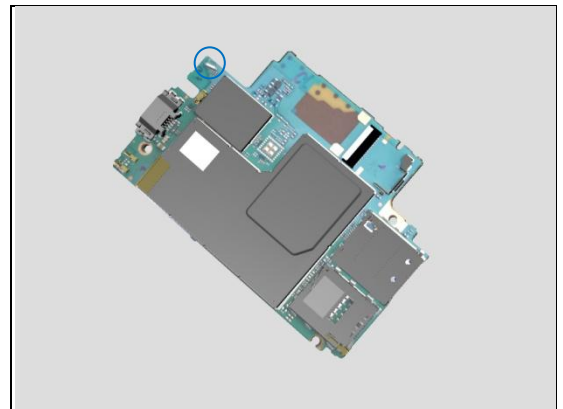


**Check:**

Inspect the LED on Main PBA.

**Action:**

1. If dirty or oxidized – clean it.
2. Replace Main PBA



## Problem Areas

## 1.6 Speaker

### 1.6.1 Loudspeaker

**Check:**

Inspect the Loudspeaker external port on the Front Assy.

**Action:**

1. If clogged – clean it.

2. If damaged – replace the Front Assy.



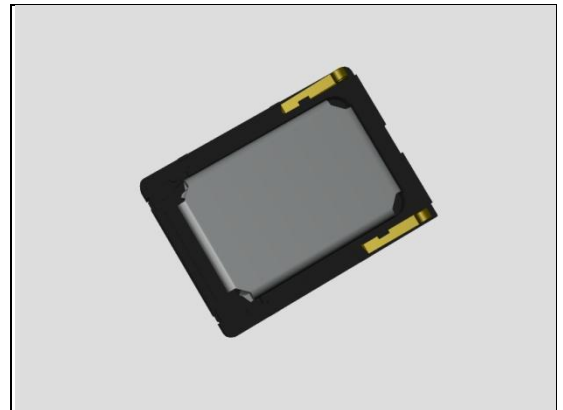
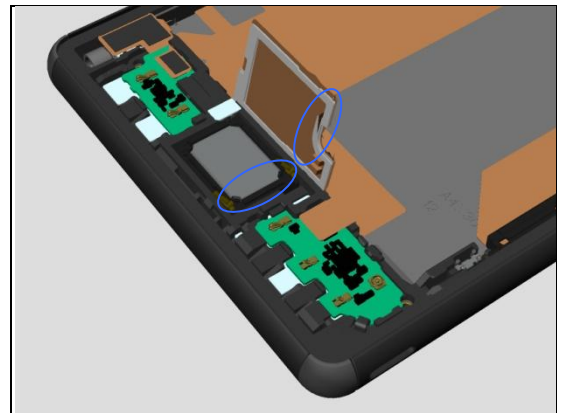
**Check:**

Inspect the contact pads on the Relay FPC and the contact pins on the Loudspeaker B.

**Action:**

1. If dirty – clean them.

2. If the contact pins of the Loudspeaker B or the Loudspeaker B are damaged – replace it.



## Problem Areas: Speaker



3. If the contact pads on the Relay FPC are damaged - replace the Relay FPC.

**Check:**

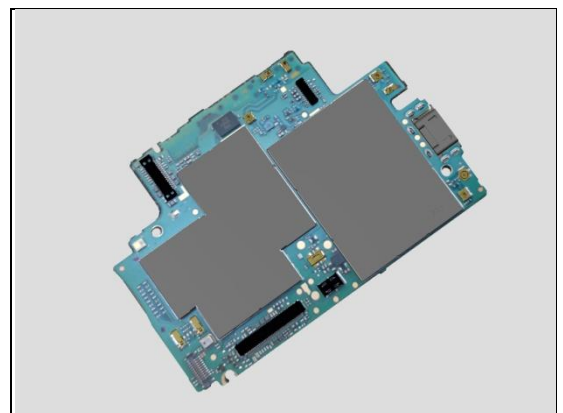
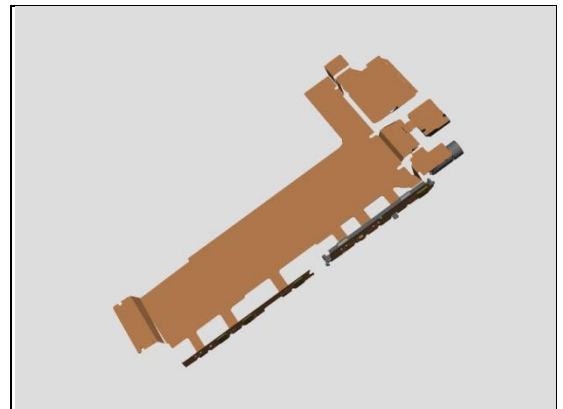
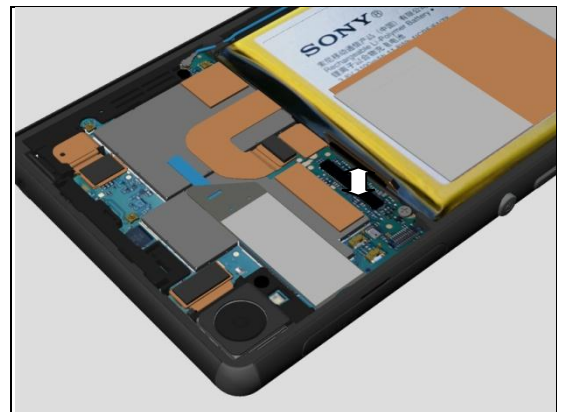
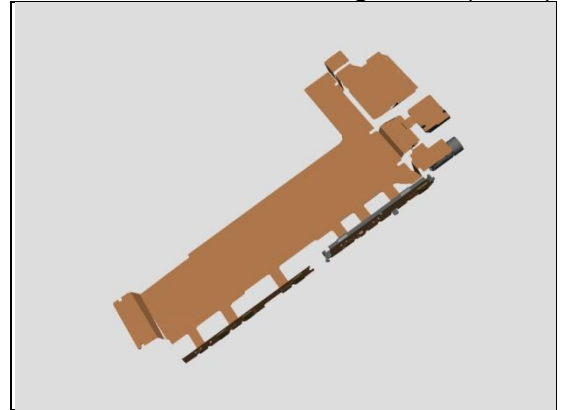
Inspect the BtB connector of Relay FPC to Main PBA.

**Action:**

1. If not properly connected – disconnect and reconnect it.
2. If dirty or oxidized – clean it.

3. If the Relay FPC is damaged – replace it.

4. Replace Main PBA.



## Problem Areas

### 1.7 Earphone

## 1.7.1 Ear Speaker

### Check:

Inspect the external port of Ear Speaker on the Front Assy.

### Action:

1. If clogged – clean it.

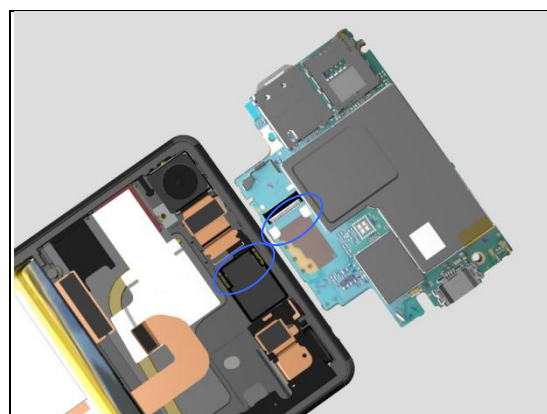


### Check:

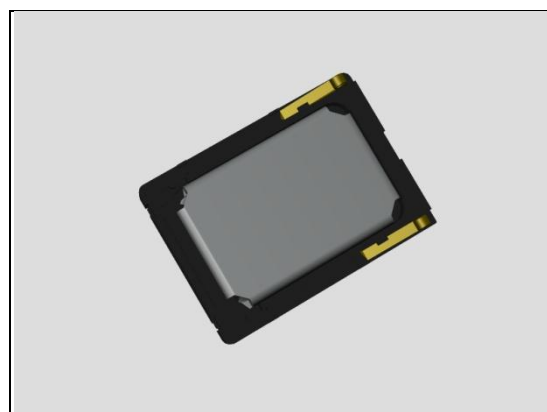
Inspect the contact pads on the Main PBA and the contact pins on the Loudspeaker.

### Action:

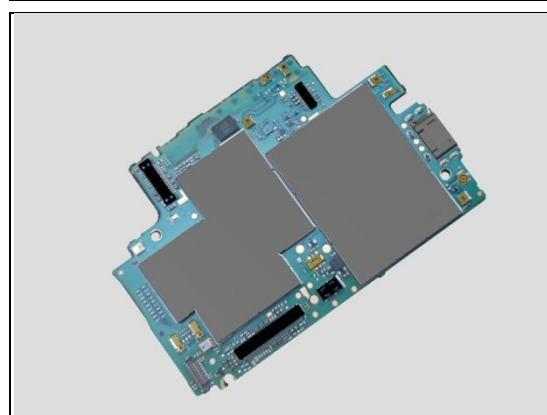
1. If dirty – clean them.



2. If the contact pins of the Loudspeaker or the Loudspeaker are damaged – replace it.



3. Replace Main PBA.



## Problem Areas

## 1.8 Microphone

## 1.8.1 Primary Microphone

### Check:

Inspect the Primary Microphone's external port on the Front Assy.

### Action:

1. If clogged – clean it.

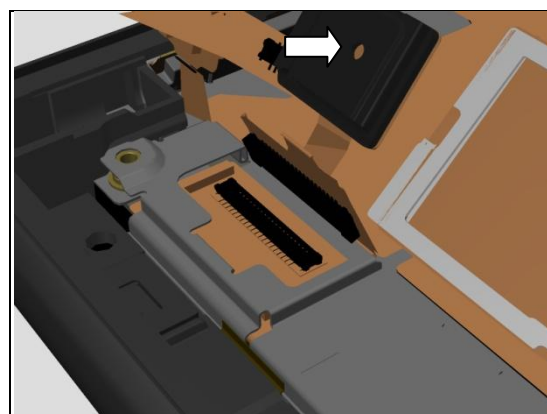


### Check:

Inspect the Holder Mic sub assembly on the Relay FPC.

### Action:

1. If clogged – clean it.



3. If the Holder Mic sub assembly is damaged – replace it.



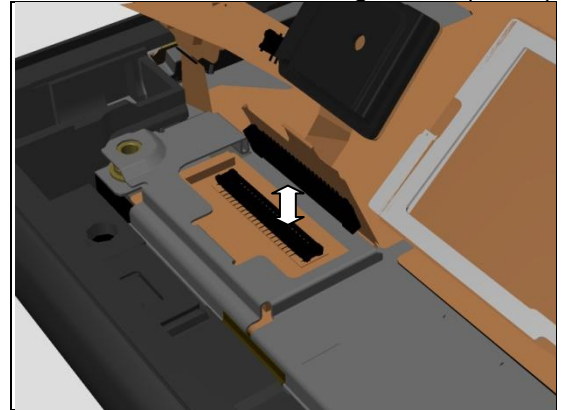
## Problem Areas: Microphone

**Check:**

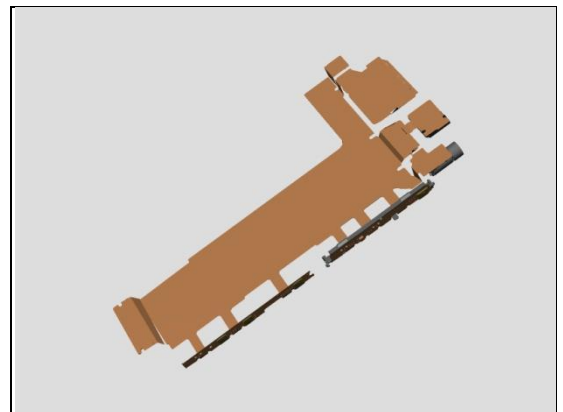
Inspect the BtB connector of Relay FPC to Front Assy.

**Action:**

1. If not properly connected – disconnect and reconnect it.
2. If dirty or oxidized – clean it.



3. If the Relay FPC is damaged – replace it.

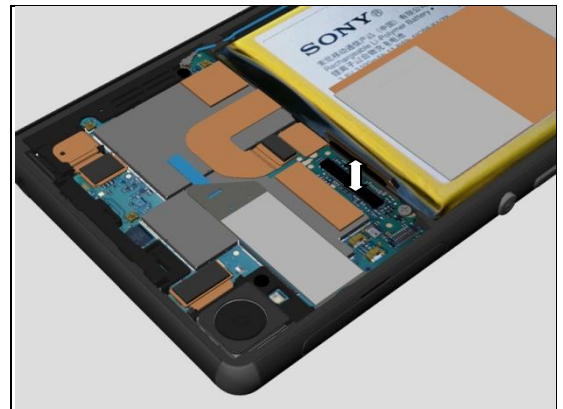


**Check:**

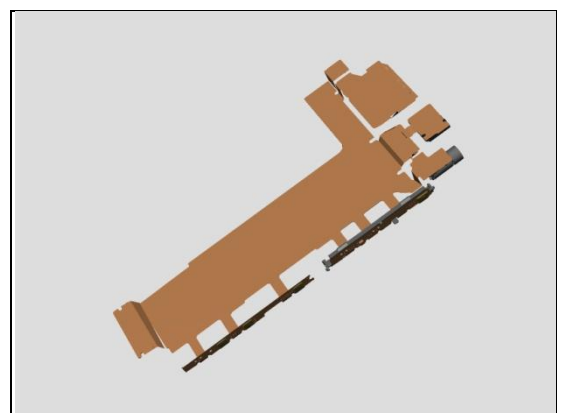
Inspect the BtB connector of Relay FPC to Main PBA.

**Action:**

1. If not properly connected – disconnect and reconnect it.
2. If dirty or oxidized – clean it.



3. If the Relay FPC is damaged – replace it.
4. Replace Main PBA.



## Problem Areas: Microphone

## 1.8.1 Secondary Microphone

### Check:

Inspect the external port of secondary microphone on the Front Assy.

### Action:

1. If clogged – clean it.



### Check:

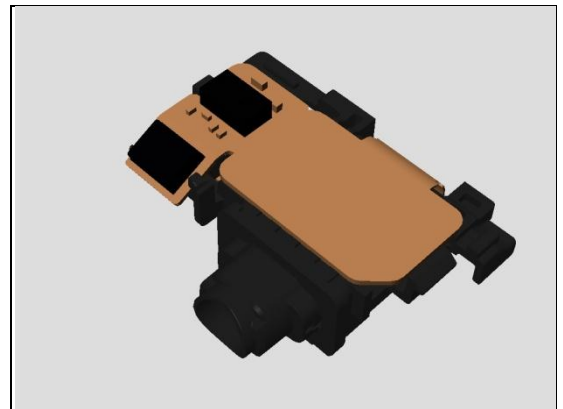
Inspect the BtB connector of Audio Jack to Main PBA.

### Action:

1. If not properly connected – disconnect and reconnect it.
2. If dirty or oxidized – clean it.



3. If the Audio Jack is damaged – replace it.
4. Replace Main PBA.



## Problem Areas

### 1.9 Vibrator

#### 1.9.1 Vibrator not generating alerts

**Check:**

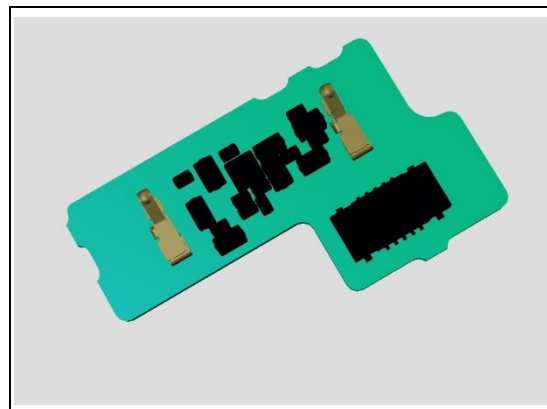
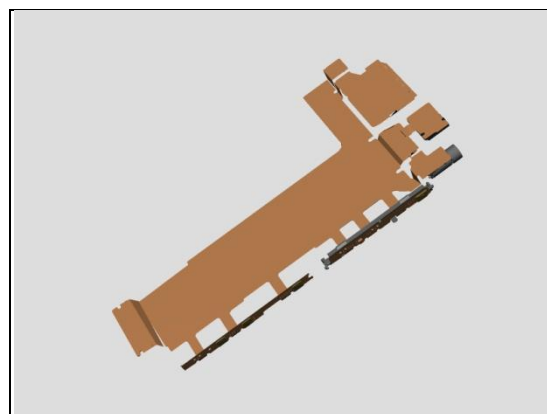
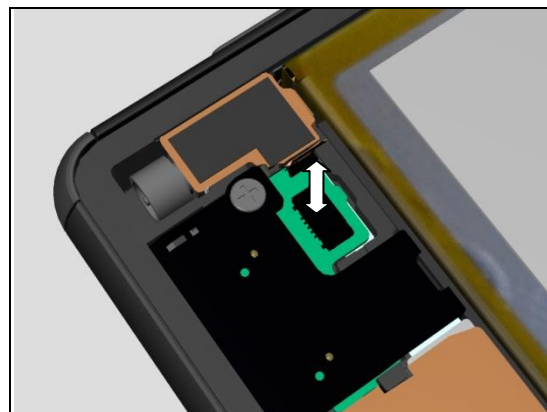
Inspect the BtB connector of Sub PBA-B.

**Action:**

1. If not properly connected – disconnect and reconnect it.
2. If dirty or oxidized – clean it.

3. If the Relay FPC is damaged – replace it.

4. Replace Sub PBA-B



## Problem Areas

## 1.10 Camera

### 1.10.1 Main Camera

**Check:**

Inspect the external area of camera window.

**Action:**

1. If dirty – clean it.

2. If scratched or damaged – replace the Rear Panel.

**Check:**

Inspect the BtB connector of Main Camera to Main PBA.

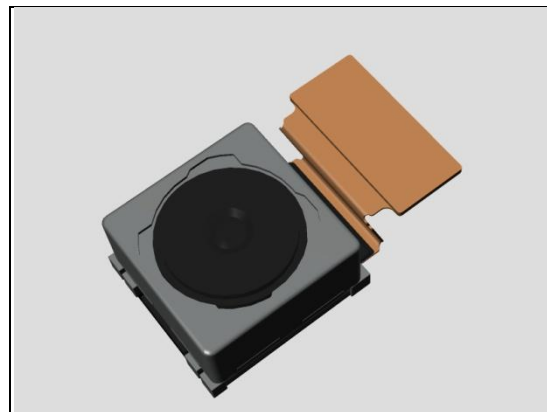
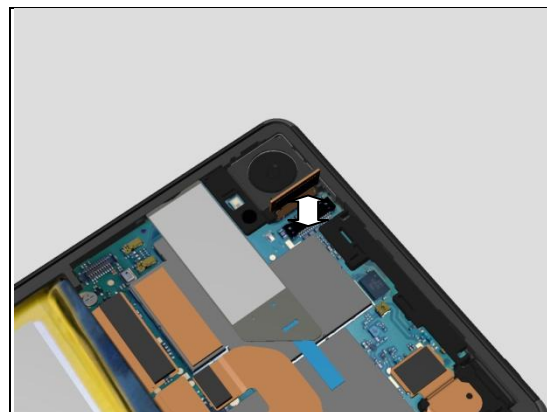
**Action:**

1. If not properly connected – disconnect and reconnect it.

2. If dirty or oxidized – clean it.

3. If the BtB connector or the Main Camera is damaged – replace the Main Camera.

4. Replace Main PBA.



## Problem Areas: Camera

## 1.10.2 Video Call Camera defects

**Check:**

Inspect the external area of the video camera window.

**Action:**

1. If dirty – clean it.

2. If scratched or damaged – replace the Front Assy.

**Check:**

Inspect the Zif connector of Sub Camera to Main PBA.

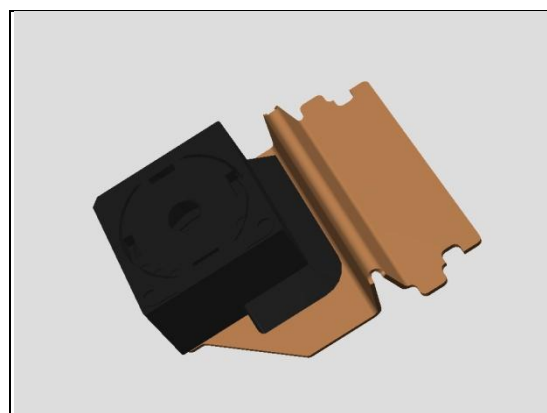
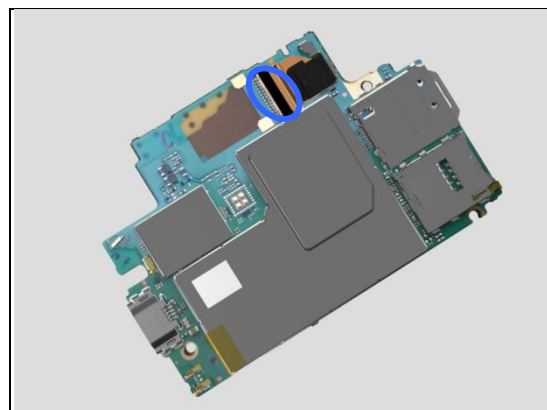
**Action:**

1. If not properly connected – disconnect and reconnect it.

2. If dirty or oxidized – clean it.

3. If the Sub Camera is damaged – replace the Sub Camera.

4. Replace Main PBA.



## Problem Areas

### 1.11 Flash LED



## 1.11.1 Flash LED not flashing

**Check:**

Inspect the external area of the flash LED Light.

**Action:**

1. If dirty – clean it.

2. If scratched or damaged – replace the Rear Panel.

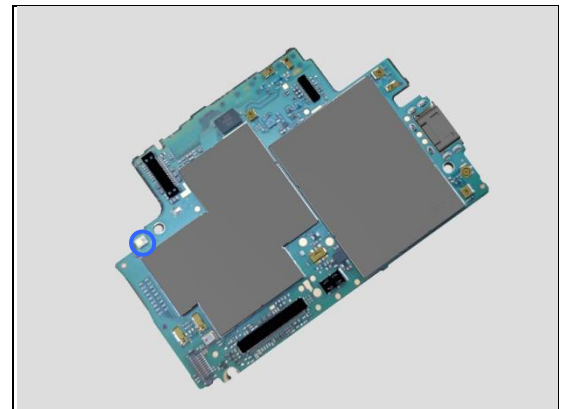
**Check:**

Inspect the Flash LED on Main PBA.

**Action:**

1. If dirty – clean it.

2. Replace Main PBA.



## Problem Areas

## 1.12 Bluetooth and WLAN

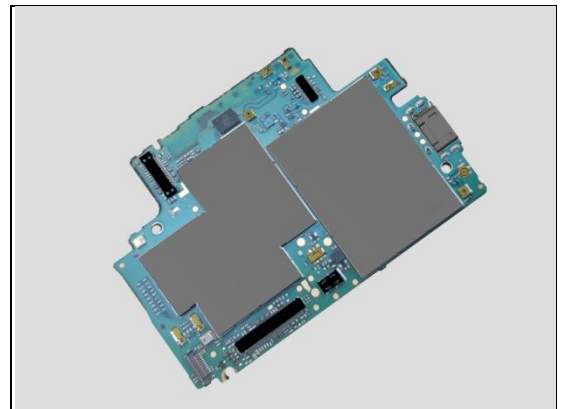
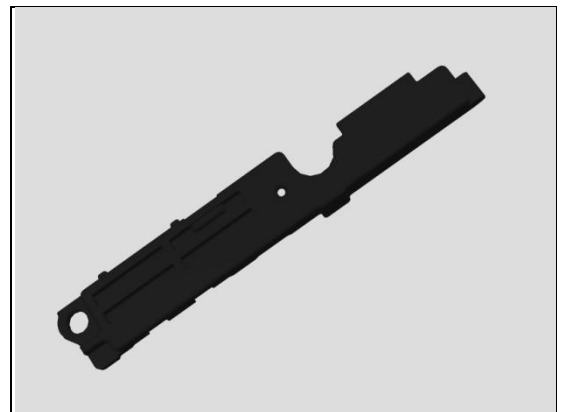
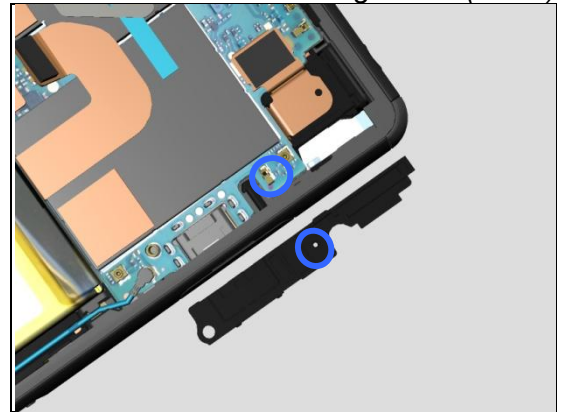
## 1.12.1 Bluetooth or WLAN connection failure

### Check:

Inspect the Antenna BT + WLAN contact pad and the contact pins on main PBA.

### Action:

1. If dirty or oxidized – clean the pads and pins.
2. If the contact pad on Antenna BT + WLAN is damaged – replace the Antenna BT + WLAN.
3. If the contact pin on Main PBA is damaged – replace Main PBA.



## Problem Areas

## 1.13 NFC

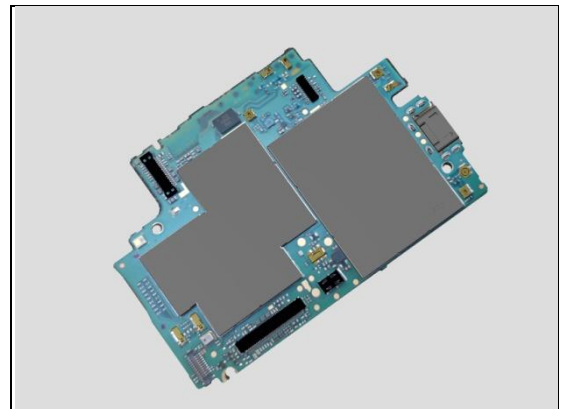
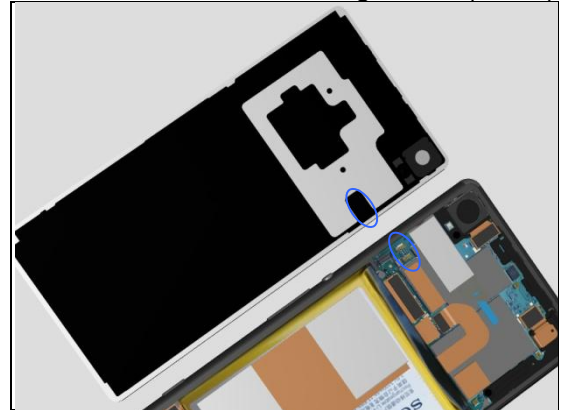
## 1.13.1 NFC malfunctions

### Check:

Inspect the NFC antenna contact pads on Rear Panel and the contact pins on Main PBA.

### Action:

1. If dirty or oxidized – clean the pads and pins.
2. If the NFC antenna contact pads are damaged – replace the Rear Panel.
3. If the contact pins on main PBA are damaged – replace Main PBA.



## Problem Areas

## 1.14 GPS

## 1.14.1 GPS malfunctions

### Check:

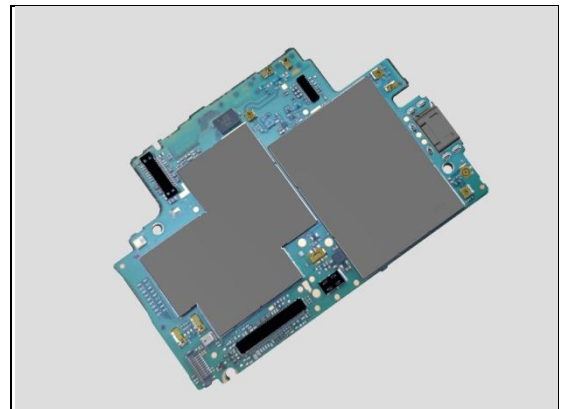
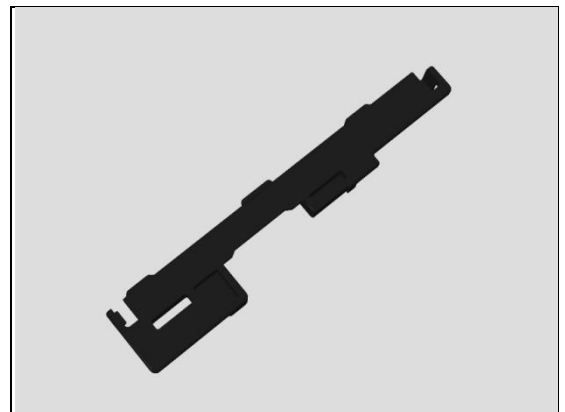
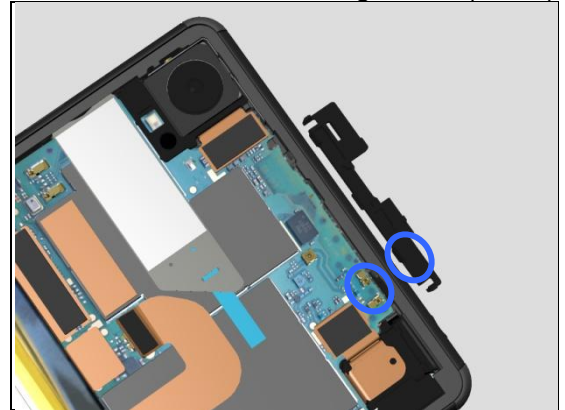
Inspect the contact pads on Sub Antenna and the contact pins on Main PBA.

### Action:

1. If dirty or oxidized – clean the pads and pins.

2. If the Sub Antenna contact pad is damaged – replace the Sub Antenna.

3. If the contact pins on main PBA are damaged – replace Main PBA.



## Problem Areas

## 1.15 Compass

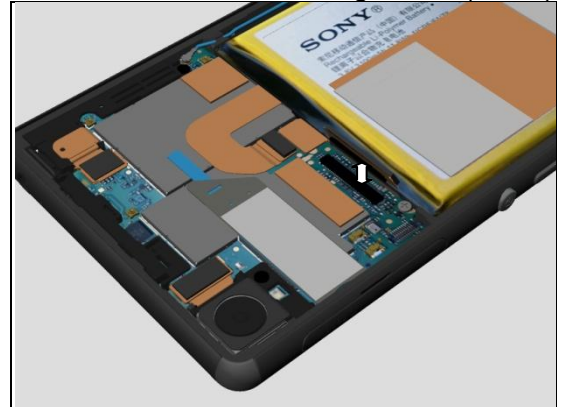
## 1.15.1 Compass fails

**Check:**

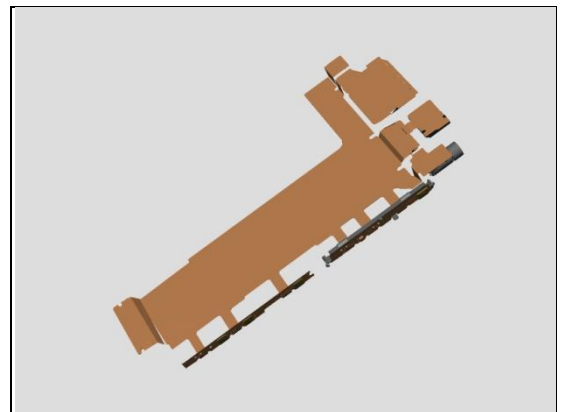
Inspect the BtB connector of Relay FPC to Main PBA.

**Action:**

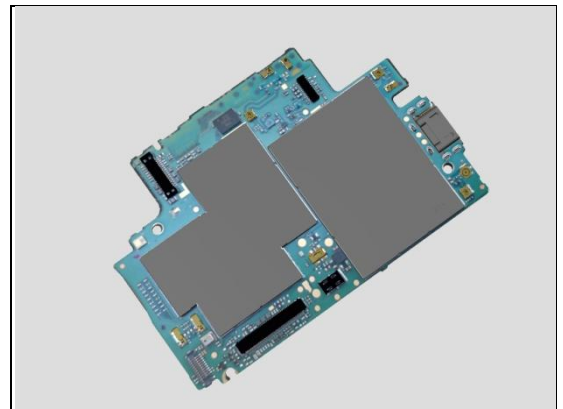
1. If not properly connected – disconnect and reconnect it.
2. If dirty or oxidized – clean it.



3. If the Relay FPC is damaged – replace it.



4. If the contact pins on main PBA are damaged – replace Main PBA.



## Problem Areas

## 1.16 Accelerometer

## **1.16.1 Accelerometer test fails**

**Action:**

1. Follow the 1289-2983 Sony Mobile Repair Application – mechanical to run the Accelerometer Calibration.
2. Replace Main PBA.

## Problem Areas

### 1.17 Gyroscope

#### 1.17.1 Gyroscope test fails

**Action:**

1. Follow the 1289-2983 Sony Mobile Repair Application – mechanical to run the Gyroscope Calibration.
2. Replace Main PBA.

## Problem Areas

### 1.18 Ambient Light Sensor

#### 1.18.1 Light Sensor malfunctions

**Check:**

Inspect the external window area of light sensor on the Front Assy.

**Action:**

1. If dirty – clean it.

2. If scratched or damaged – replace the Front Assy.



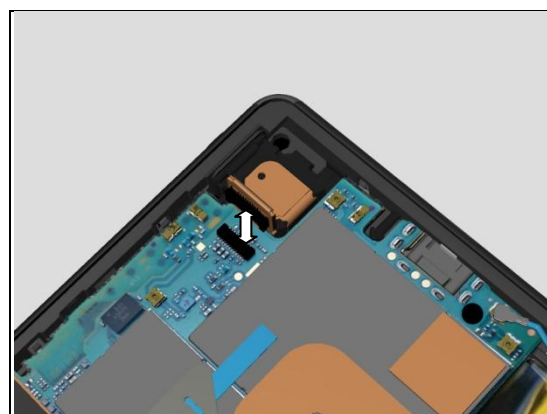
**Check:**

Inspect the BtB connector of Audio Jack to Main PBA.

**Action:**

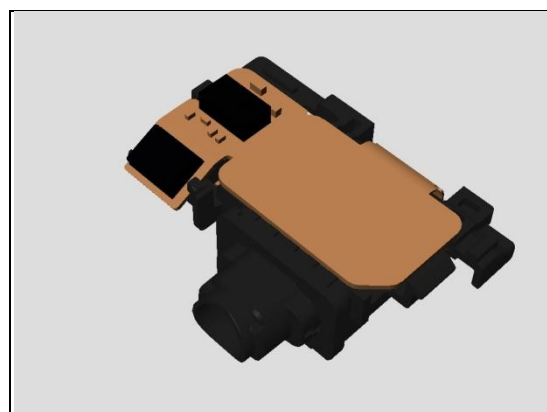
1. If not properly connected – disconnect and reconnect it.

2. If dirty or oxidized – clean it.



3. If the Audio Jack is damaged – replace it.

4. Replace Main PBA.



## Problem Areas



## 1.19 Proximity Switch

### 1.19.1 Proximity switch malfunctions

**Check:**

Inspect the external window area of proximity switch.

**Action:**

1. If dirty – clean it.

2. If scratched or damaged – replace the Front Assy.

**Check:**

Inspect the BtB connector of Audio Jack to Main PBA.

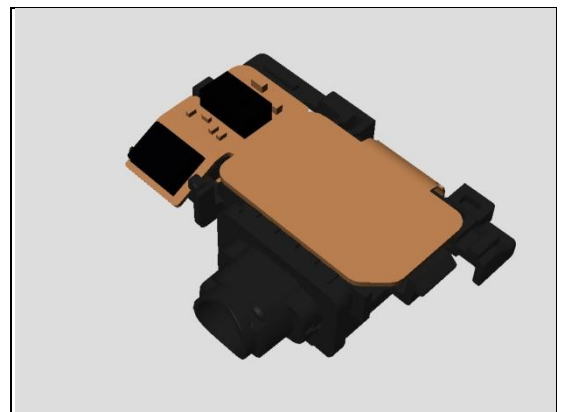
**Action:**

1. If not properly connected – disconnect and reconnect it.

2. If dirty or oxidized – clean it.

3. If the Audio Jack is damaged – replace it.

4. Replace Main PBA.



## Problem Areas

### 1.20 Pressure Sensor

#### 1.20.1 Pressure Sensor test fails

Replace Main PBA.

## Problem Areas

## 1.21 Water Resistance

### 1.21.1 Water Resistance fails

**Check:**

Inspect the Cap SD.

**Action:**

1. If dirty – clean it.
2. If not properly assembled – disassemble and reassemble.



3. If the Cap SD is damaged – replace it.

**Run the Water Resistance Test again!**



**Check:**

Inspect the Cap USB.

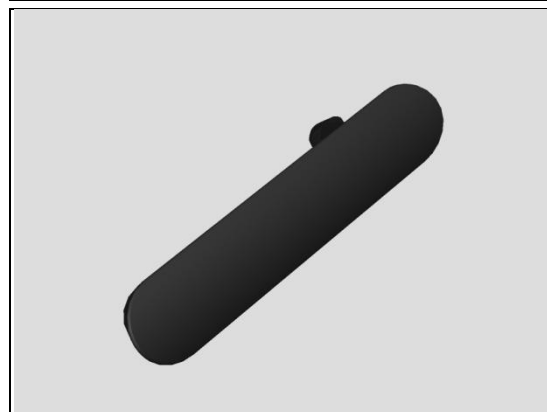
**Action:**

1. If dirty – clean it.
2. If not properly assembled – disassemble and reassemble.



3. If the Cap USB is damaged – replace it.

**Run the Water Resistance Test again!**



## Problem Areas: Water Resistance

### Check:

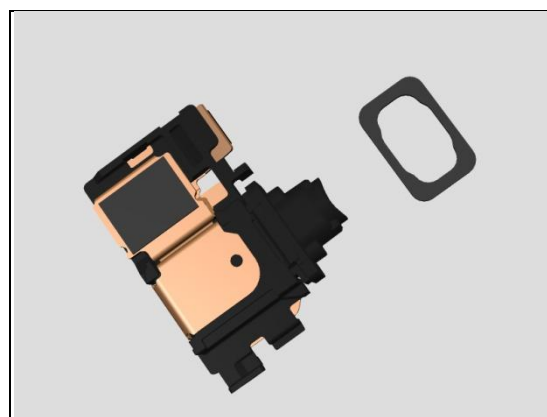
Inspect the Audio Jack hole.



### Action:

If damaged – replace the Audio Jack and Adhesive WP Audio Jack.

**Run the Water Resistance Test again!**



### Check:

Inspect the Magnetic Connector.



### Action:

If not properly assembled or damaged – replace it.

**Run the Water Resistance Test again!**



## Problem Areas: Water Resistance

### Check:

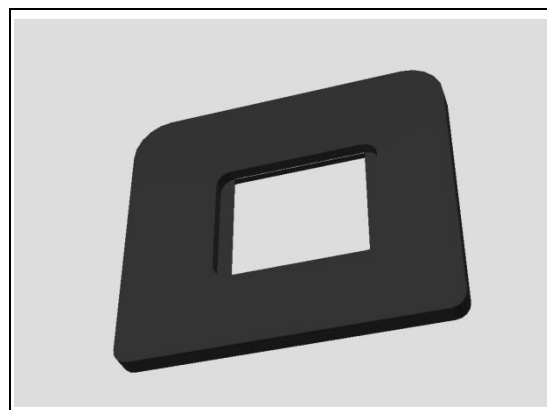
Inspect the primary microphone port.



### Action:

If damaged – replace Gore Sheet(1<sup>st</sup> mic).

**Run the Water Resistance Test again!**



### Check:

Inspect the secondary microphone port.



### Action:

If damaged – replace the Front Assy.

**Run the Water Resistance Test again!**



## Problem Areas: Water Resistance

### Check:

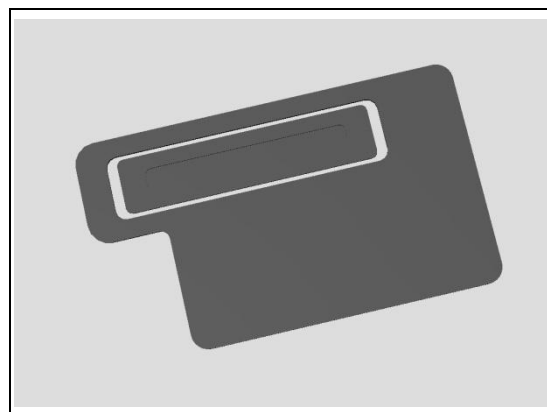
Inspect the Ear Speaker.



### Action:

If damaged – replace the Grill Receiver.

**Run the Water Resistance Test again!**

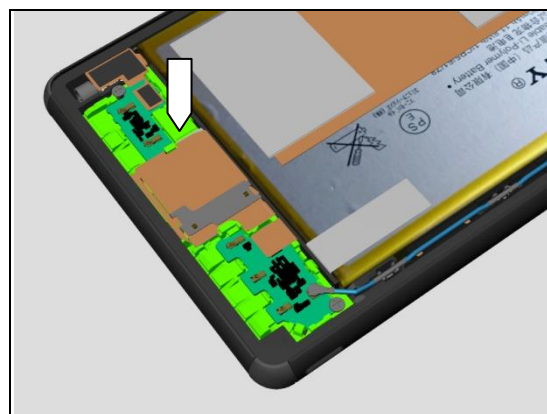


### Check:

Inspect Holder Speaker sub assembly.

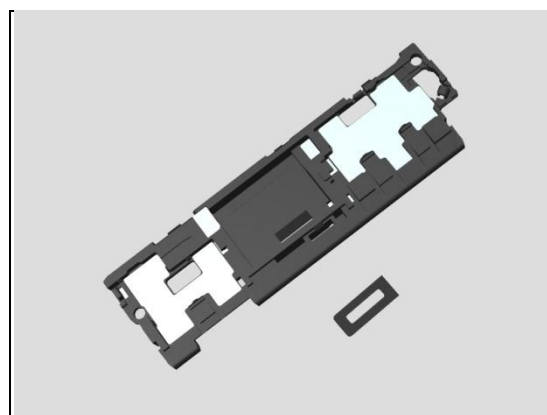
### Action:

1. If dirty – clean it.
2. If not properly assembled – disassemble and reassemble.



3. If the Holder Speaker sub assembly is damaged – replace the Holder Speaker sub assembly and Adhesive WP holder speaker.

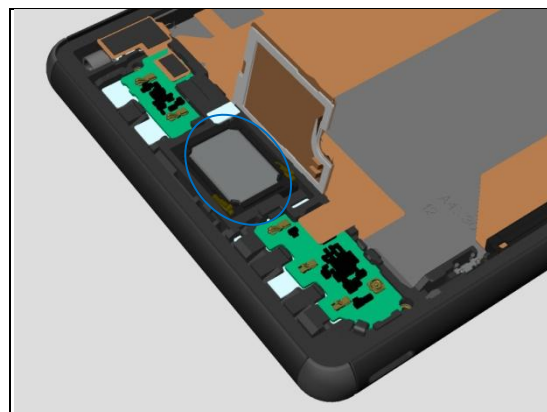
**Run the Water Resistance Test again!**



## Problem Areas: Water Resistance

### Check:

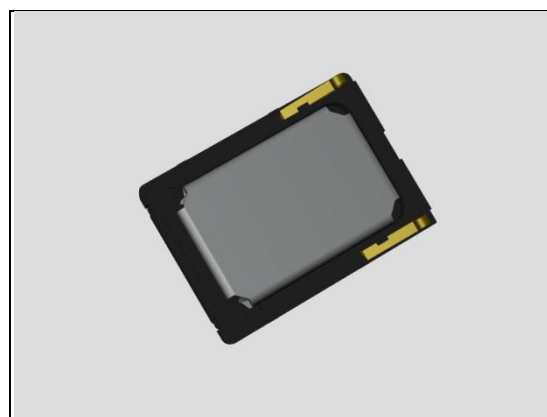
Inspect Loudspeaker B.



### Action:

1. If the Loudspeaker B is damaged – replace the Loudspeaker B and Adhesive WP Speaker.

**Run the Water Resistance Test again!**



### Check:

Inspect the edge of Front Assy for damage and gap.



### Action:

1. If the edge of Front Assy has gap – replace it.  
2. If the Front Assy is damaged – replace it.

**Run the Water Resistance Test again!**



## Problem Areas: Water Resistance

**Check:**

Inspect the edge of Rear Panel for damage and gap.

**Action:**

1. If the edge of Rear Panel has gap – reassembly it.
2. If damaged – replace it.

**Run the Water Resistance Test again!**





## Problem Areas

### 1.22 Real Time Clock

#### 1.22.1 Real time clock test fails

**Action:**

Replace Main PBA.

## Problem Areas

### 1.23 Total call time

#### 1.23.1 Total call time fails

**Action:**

Replace Main PBA.

## Problem Areas

## 1.24 External Memory

### 1.24.1 Memory Card not detected

**Check:**

Inspect that if a memory card is properly inserted.

**Action:**

If not properly inserted – insert the memory card correctly.

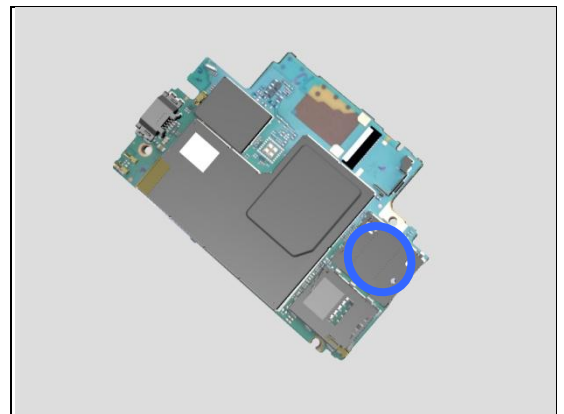


**Check:**

Inspect the memory card holder on Main PBA.

**Action:**

1. If dirty or clogged – clean the holder.
2. Replace Main PBA.



## Problem Areas

## 1.25 Security

### 1.25.1 Security fails

**Action:**

Replace Main PBA.

## Problem Areas

### 1.26 FM Radio

#### 1.26.1 No/Poor FM Radio reception

**Check:**

Inspect the external port of the Front Assy.

**Action:**

1. If dirty or oxidized – clean it.

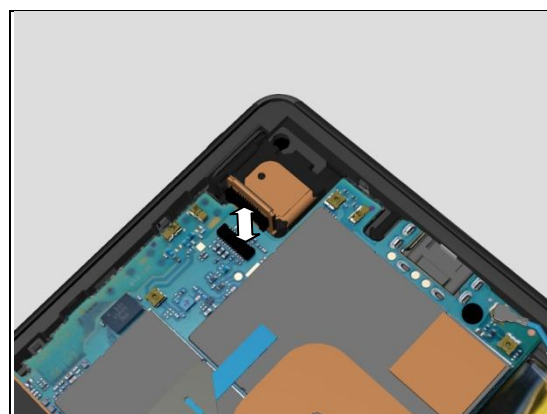


**Check:**

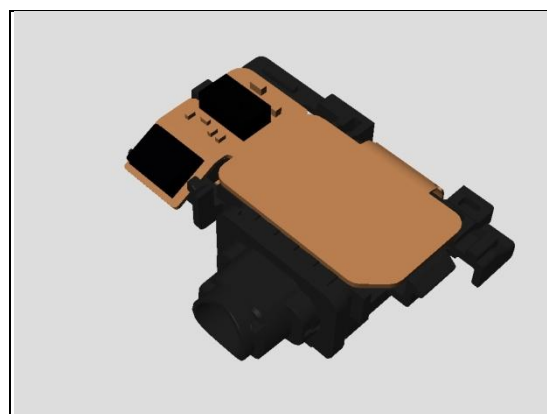
Inspect the BtB connector of Audio Jack to Main PBA.

**Action:**

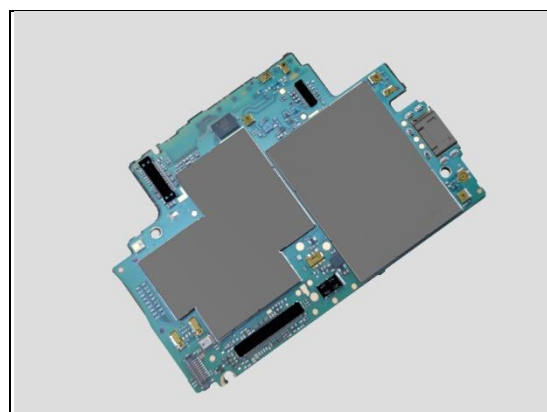
1. If not properly connected – disconnect and reconnect it.
2. If dirty or oxidized – clean it.



3. If the BtB connector or Audio Jack is damaged – replace the Audio Jack.



4. Replace Main PBA.



## Problem Areas

## 1.27 Battery Health test

### 1.27.1 Battery Health test fails

N/A.

## Problem Areas

## **1.28 Flip Slider Counter**

### **1.28.1 Flip Slider Counter fails**

N/A. Not slider phone.

## Problem Areas

### 1.29 Verify Certificates

#### 1.29.1 Verify Certificates fails

**Action:**

N/A.

## Problem Areas

1288-9441 Rev 3

© Sony Mobile Communications AB – Company Internal

48(59)



## **1.30 IrDA Test**

### **1.30.1 IrDA test fails**

N/A. No IrDA functionality in the phone.

## Problem Areas

### 1.31 TV-Out Test

#### 1.31.1 TV-Out test fails

**Check:**

Inspect the USB connector.

**Action:**

1. If dirty or oxidized – clean the connector.
2. Replace Main PBA.



## Problem Areas

### 1.32 Network & Signal

#### 1.32.1 No/Poor signal

**Check:**

Inspect the contact pads on the Main Antenna and the contact pins on Sub PBA-A and Sub PBA-B.

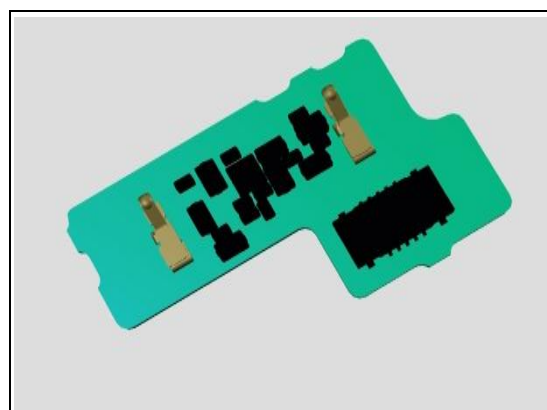
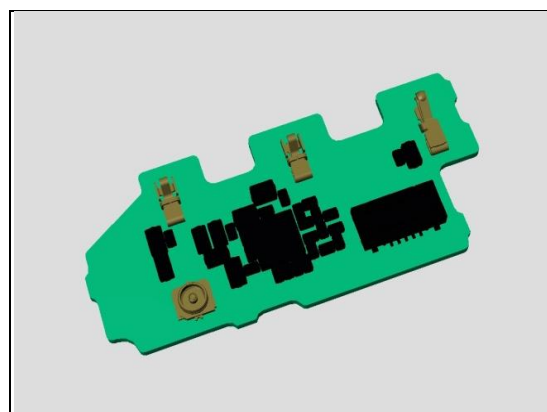
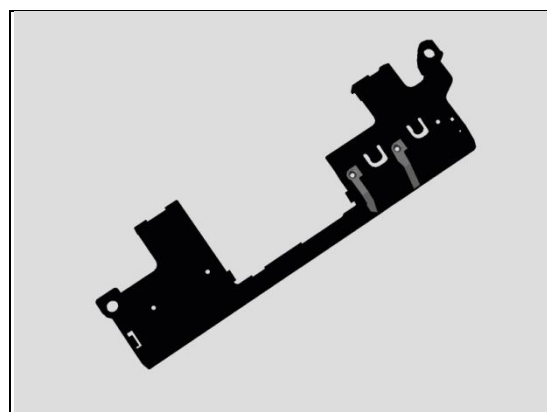
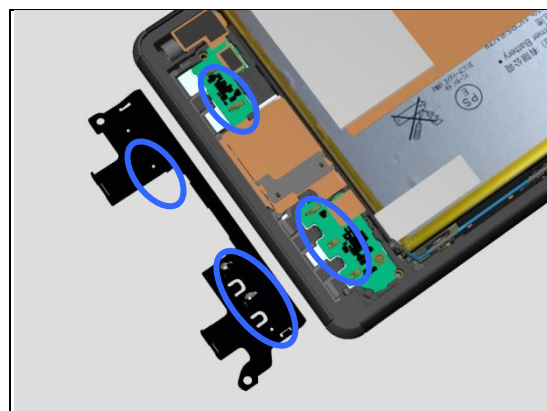
**Action:**

1. If dirty or oxidized – clean the pads and pins.

2. If the contact pads are damaged – replace the Main Antenna.

3. If the contact pins on Sub PBA-A are damaged – replace the Sub PBA-A.

4. If the contact pins on Sub PBA-B are damaged – replace the Sub PBA-B.



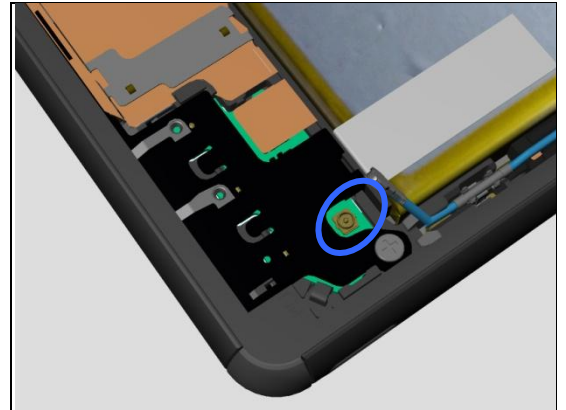
## Problem Areas: Network & Signal

**Check:**

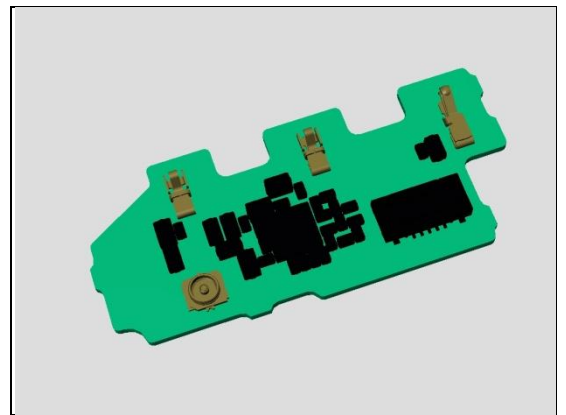
Inspect the RF connector of RF cable to the Sub PBA-A.

**Action:**

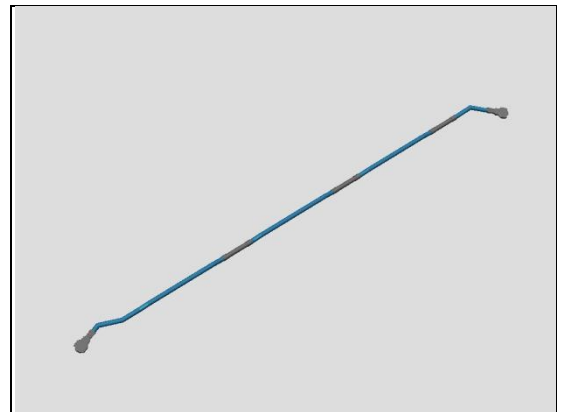
1. If not properly connected – disconnect and reconnect it.
2. If dirty or oxidized – clean it.



3. If the RF connector on Sub PBA-A is damaged – replace the Sub PBA-A.



4. If the RF cable is damaged – replace the RF cable.



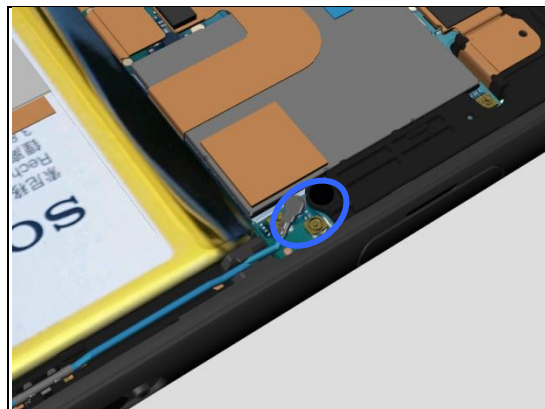
## Problem Areas: Network & Signal

### Check:

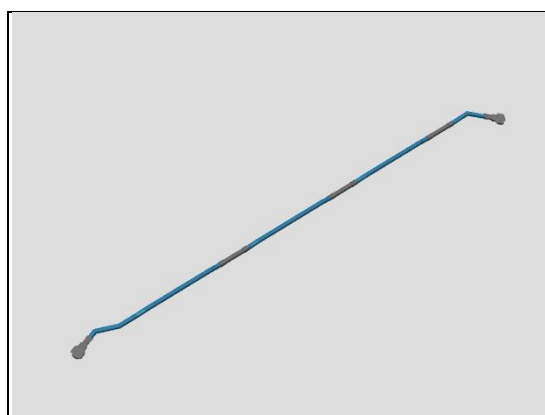
Inspect the RF connector of RF cable to the Main PBA.

### Action:

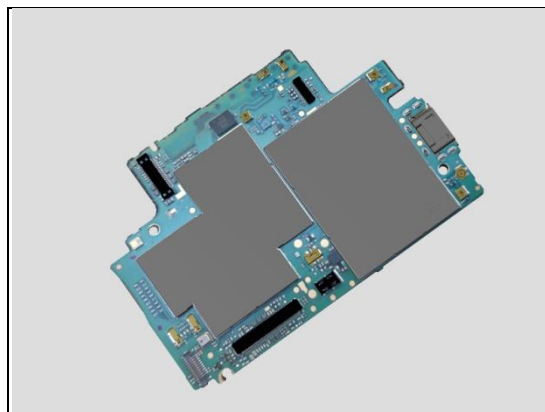
1. If not properly connected – disconnect and reconnect it.
2. If dirty or oxidized – clean it.



3. If the RF cable is damaged – replace the RF cable.



4. Replace Main PBA.



## Problem Areas

## 1.33 SIM

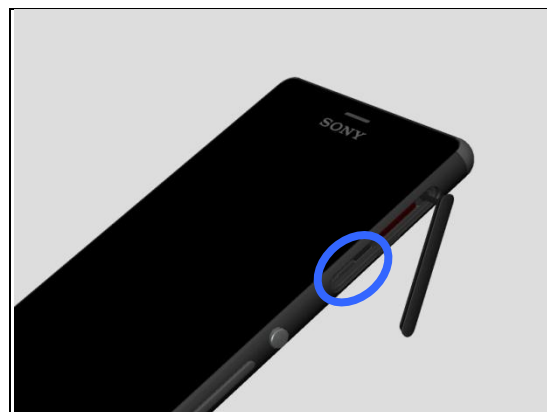
### 1.33.1 SIM not detected

**Check:**

Inspect the external port of the SIM card holder and check if a SIM card can be properly inserted.

**Action:**

If dirty or clogged – clean the external port.

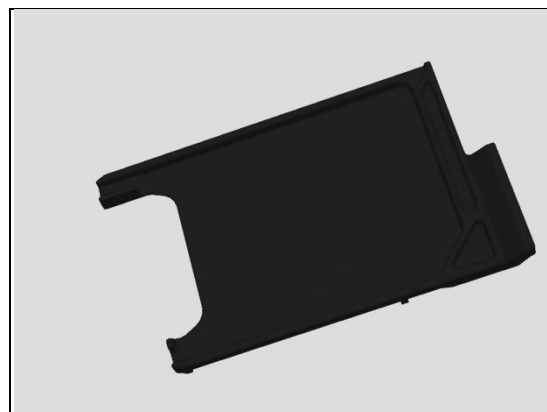


**Check:**

Inspect the Sim Tray.

**Action:**

1. If the Sim Tray is damaged – Replace it.

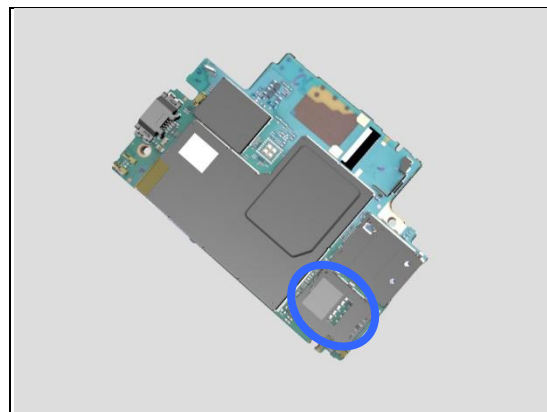


**Check:**

Inspect the SIM card holder on Main PBA.

**Action:**

1. If dirty or clogged – clean the holder.  
2. Replace Main PBA.



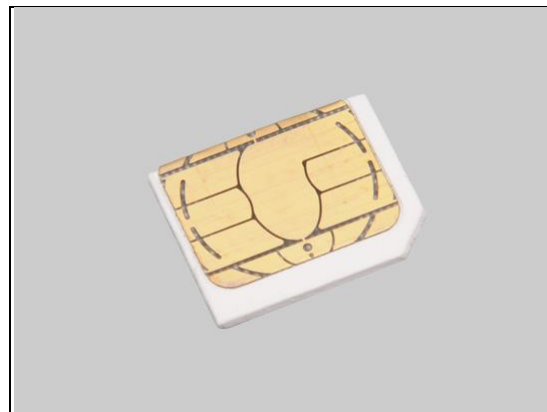
### 1.33.2 Incorrect Nano SIM indicated

**Check:**

Check whether the phone is locked to a particular operator and whether the correct operator Nano SIM is being used.

**Action:**

1. Use a proper operator Nano SIM or test Nano SIM.  
2. Replace Main PBA.



## Problem Areas

### 1.34 Charging

#### 1.34.1 Battery will not charge by USB connector

**Check:**

Inspect the USB connector.

**Action:**

1. If dirty or oxidized – clean the connector.
2. Replace Main PBA.

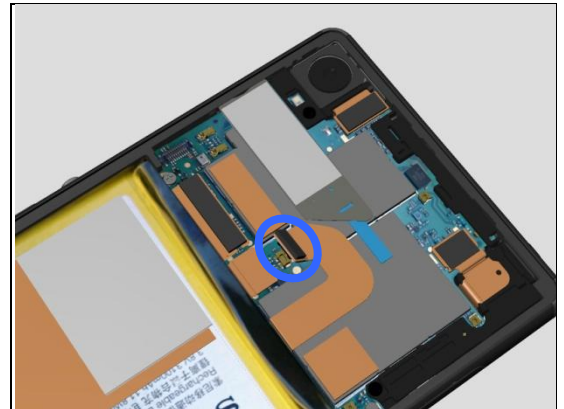


**Check:**

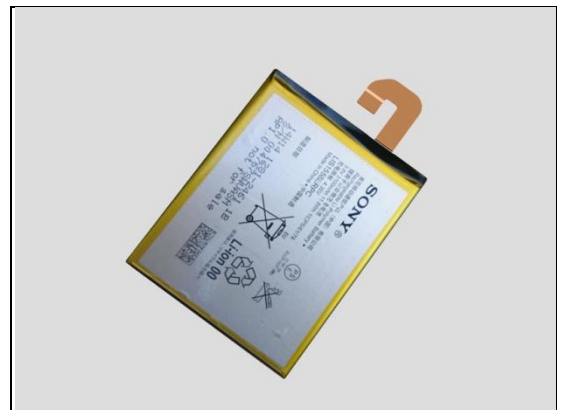
Inspect the BtB connector of the Embedded Battery to Main PBA.

**Action:**

1. If not properly connected – disconnect and reconnect it.
2. If dirty or oxidized – clean the both sides of the BtB connector.



3. If the BtB connector, the FPC or Embedded Battery is damaged – replace the Embedded Battery.



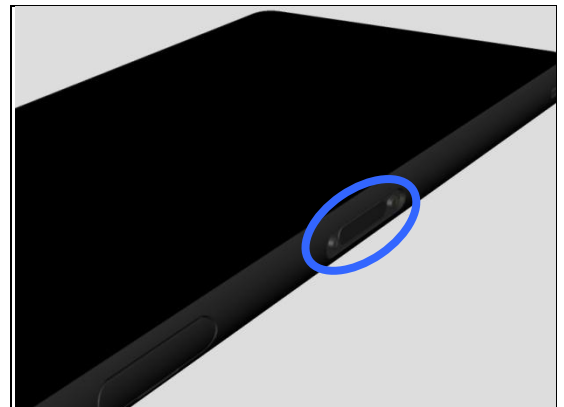
#### 1.34.2 Battery will not charge by charge pad

**Check:**

Inspect the external port of the Magnetic connector.

**Action:**

If dirty or oxidized – clean it.



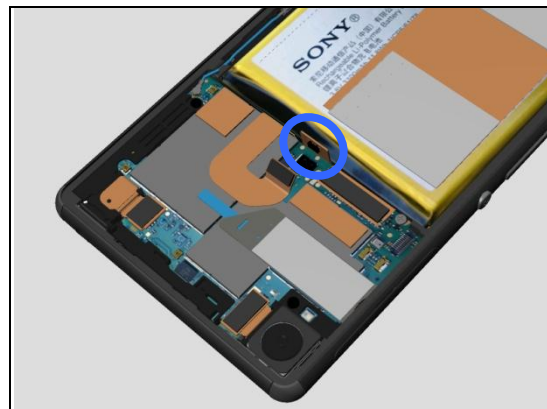
## Problem Areas: Charging

**Check:**

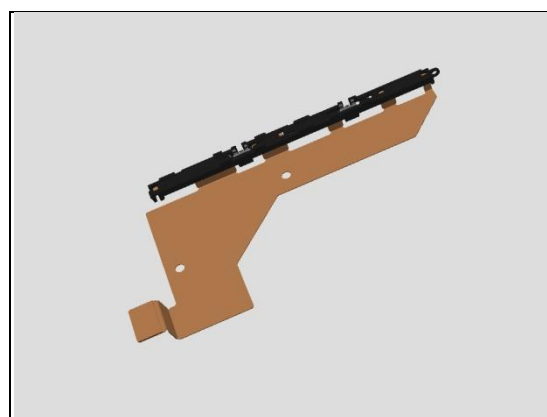
Inspect the BtB connector of the Charge FPC to Main PBA.

**Action:**

1. If not properly connected – disconnect and reconnect it.
2. If dirty or oxidized – clean the both sides of the BtB connector.



3. If the BtB connector or the FPC is damaged – replace the Charge FPC.

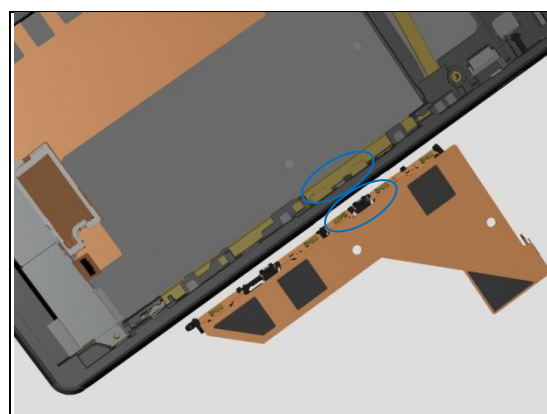


**Check:**

Inspect the contact pins on Charge FPC and pads on Magnetic connector.

**Action:**

1. If dirty or oxidized – clean the pins and pads.



2. If the contact pads of Magnetic connector are damaged – replace the Magnetic connector.
3. Replace Main PBA.



## Problem Areas



## 1.35 Audio Jack test

### 1.35.1 Connection to headset fails

**Check:**

Inspect the external port of the Audio Jack.

**Action:**

1. If dirty or oxidized – clean it.

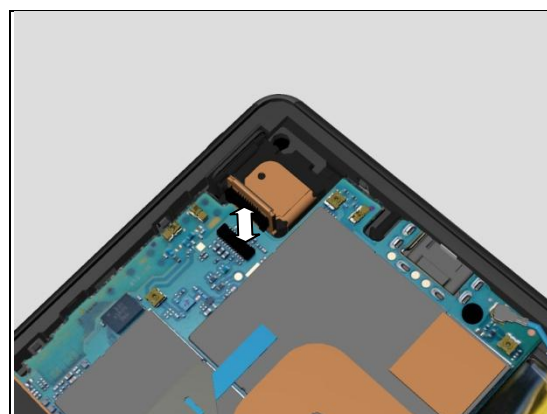


**Check:**

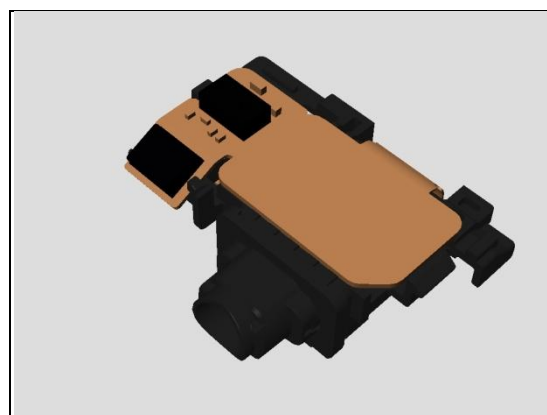
Inspect the BtB connector of Audio Jack to Main PBA.

**Action:**

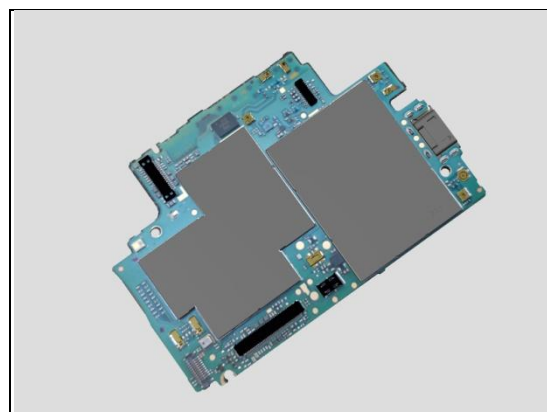
1. If not properly connected – disconnect and reconnect it.
2. If dirty or oxidized – clean it.



3. If the BtB connector or Audio Jack is damaged – replace the Audio Jack.



4. Replace Main PBA.



## Problem Areas

## 1.36 Data Communication

### 1.36.1 Data transfer via System Connector fails

**Check:**

Inspect the USB connector.

**Action:**

1. If dirty or oxidized – clean the connector.
2. Replace Main PBA.



## 2 Revision History

Rev.	Date	Changes / Comments
1	2014-09-12	Initial release
2	2014-09-22	Added D6616
3	2015-09-16	Added D6646